

10 – 16 of November

RUSSIAN TRAVEL HUB



Organizer:



Federal Agency
for Tourism

Partners



COMMITTEE FOR
TOURISM
DEVELOPMENT OF
SAINT PETERSBURG



CONVENTION
BUREAU



Planeta
Sochi
inspiring
meetings
& events



PREMIUM TOURISM AND MICE IN THE SOUTH OF RUSSIA

**«THE BEST ROUTES FROM
SOCHI TO ANAPA»**



Moscow

Distance from Moscow to Gelendzhik is 1243 km
(flight time 2,30 hours)

Distance from Moscow to Anapa - 1473 km
(flight time 2,20 hours)

Distance from Moscow to Sochi - 1380 km
(flight time 2,20 hours)

Gelendzhik

Sochi

Anapa

RUSSIA

**SOCHI IS THE MOST NORTHERN
SUBTROPICS AREA IN THE WORLD**

**IT IS THE LONGEST CITY IN EUROPE - 148 km and the
SECOND IN LENGTH CITY IN THE WORLD after Mexico**

PREMIUM TOURISM IN THE SOUTH OF RUSSIA

RTH



Concierge service



Premium transport



Helicopters



Yachting

PREMIUM TOURISM IN THE SOUTH OF RUSSIA

GASTRONOMY

RTH



MICE AND EVENT IN THE SOUTH OF RUSSIA

RTH



Meetings



Conferences



Events



Incentive programs



SOCHI IS A UNIQUE REGION

RTH



3
SKI
RESORTS
and 150 km
of ski slopes



300
SUNNY DAYS PER YEAR
Comfort temperature
all year round
In one day you can both
swim in the sea & see
snow mountain peaks



40
MINUTES
from
seaside to the
mountains
by car

SOCHI MAP

Greater Sochi

1. Central district
2. Khostinsky district
3. Adler district
4. Lazarevsky district



Krasnaya Polyana

Central Sochi

Adler
Olympic Park
Airport

Abkhazia

HOTELS 5* AND VILLAS IN SOCHI



Radisson Collection
Paradise Resort & SPA, Sochi 5*



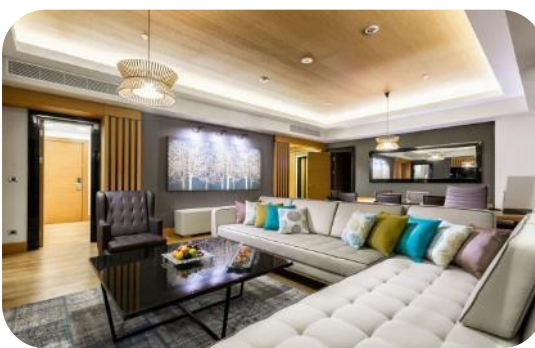
Rodina Grand Hotel & SPA 5*



Sochi Marriott Krasnaya Polyana 5*



Hyatt Regency Sochi 5*



Villa Radisson Collection
Paradise Resort & SPA, Sochi 5*



Villa Radisson Collection
Paradise Resort & SPA, Sochi 5*

IMPRESSIONS ROUTE 1 - SOCHI

RTH



The historical center of Sochi



Krasnaya Polyana



Krasnaya Polyana Casino



Olympic Park



Formula 1 Sochi



Sochi from the sea

TOUR IN SOCHI

- **Day 1** - Arrival in Sochi. Meeting transfer to the hotel
Gastronomic dinner.
- **Day 2** - Interactive walking tour "Sochi - the city of Happiness". You will walk to one of the most beautiful historical buildings of the Seaport and drink fragrant coffee with a view of the luxury yachts.
- **Day 3** - you will walk to one of the most beautiful historical buildings of the Seaport and drink fragrant coffee with a view of the luxury yachts.
- **Day 3** - You will make an amazing journey to Krasnaya Polyana. It will delight you with the grandeur of the mountain peaks of the Caucasus and intoxicate you with the purest air and the beauty of waterfalls, and the horizon is at an altitude of 2200 m above sea level. You will have lunch with mountain views in one of the local restaurants with local products.
- **Day 4** - Today you will have a meeting with the Olympic Sochi. You will see the opening stadium of the 2014 Olympic Games – Fisht, the Iceberg Ice Palace, the Puck ice Arena. Visit the motorsport venue of Europe, where the FIA Formula 1 World Championship takes place, the culmination of this journey will be a SHOW of SINGING FOUNTAINS.
- **Day 5** - Enjoy breakfast on a snow-white yacht at sea, in the company of Black Sea dolphins. Throw a coin for luck to return to Sochi!



RESORTS OF THE KRASNODAR REGION

RTH

Krasnodar Region (Gelendzhik / Anapa)

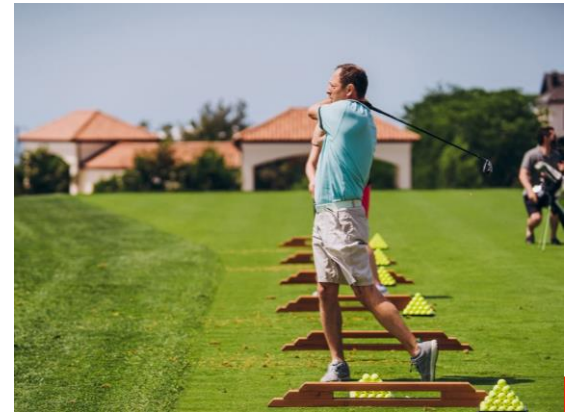
The resorts of the Krasnodar Territory are not only Sochi! Gelendzhik, Anapa are the cities where you can spend your time interestingly. For example, visit a wine tasting, ride a snow-white yacht, learn to play golf, experience vivid impressions on unique programs of author's tours. The region is also known for its rich historical heritage.



Wine tourism



Historical tourism



Golf tourism

HOTELS AND VILLAS IN GELENDZHIK AND ANAPA



Grand Hotel Anapa 5*



Metropol Grand Hotel Gelendzhik 5*



Primore Grand Resort Hotel 5*



Imperial & Champagne-spa 4*



Villa Metropol Grand
Hotel Gelendzhik 5*



Villa Primore
Grand Resort Hotel 5*

IMPRESSIONS ROUTE 2 - GELENDZHIK, ANAPA

RTH



Wine tourism



Golf club



Metropol Grand Hotel Gelendzhik 5*



Gastronomic tourism



SPA



Sea coast

TOUR IN GELENDZHIK

- **Day 1** - Arrival in Gelendzhik, accommodation, free time
- **Day 2** - Sightseeing tour, visit to the Chateau de Talu winery
- **Day 3** - Visit to the wineries of Chateau Pinault, Sikkora Estate, Burnier with a gastronomic lunch
- **Day 4** - Visit to the Russian wine house Abrau Durso with tasting. Gastronomic lunch
Optional* sailing trip on Lake Abrau, Horse ride
- **Day 5** - Free time, playing on the Gelendzhik Golf Resort, sailing on a yacht



RTH



**RUSSIAN
TRAVEL
HUB**

PLANETA SOCHI DMC

**ALMOST
20
YEARS
IN
TOURISM**

**MORE THAN
250
MICE
EVENTS**

**MORE THAN
450 000
TOURISTS**

**MORE THAN
5 000
PARTNERS-
TOURIST
AGENCIES**

ABOUT PLANETA SOCHI DMC

RTH

- PLANET SOCHI IS A TOURISTIC UNION
SPECIALIZED IN INCOMING TOURISM IN THE
SOUTH OF RUSSIA

**WE OPERATE LIKE A DESTINATION
MANAGEMENT COMPANY FOR:**

- VIP TRAVEL
- EXCLUSIVE VIP TOURS
- VIP TRANSPORT SERVICES
- CONCIERGE SERVICE 24/7
- MICE / EVENT



Contacts

PLANETA SOCHI DMC

10 – 16 of November

**RUSSIAN
TRAVEL
HUB**

- ✉ vip@planeta-sochi.ru
- ☎ +7 (862) 260-81-60
- 🌐 www.planet-sochi.ru
- @ [planeta_sochi](https://www.instagram.com/planeta_sochi)

